



Hilo, Hawaii



1946



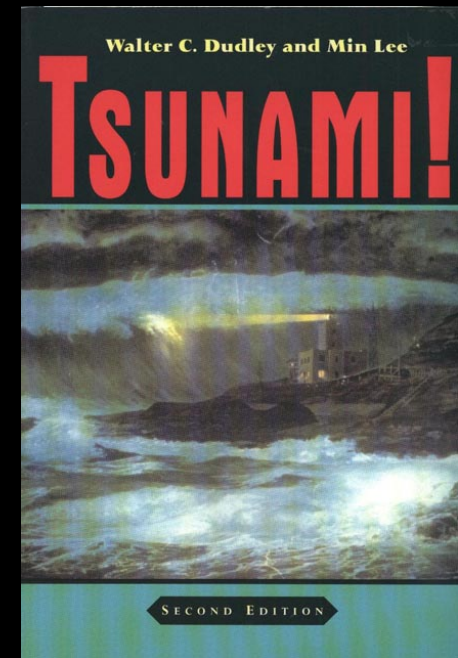
1960





Pacific Tsunami Museum Founders

Dr. Walter Dudley and Jeanne Johnston



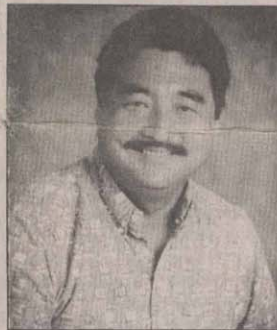
Museum Original Board of Directors



DONNA DODD



JIM WILSON



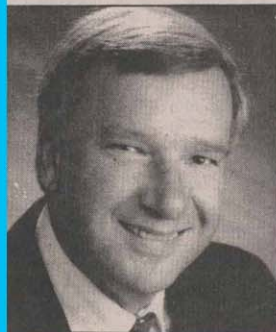
BARRY TANIGUCHI



DONNA SAKI



IAN BIRNIE



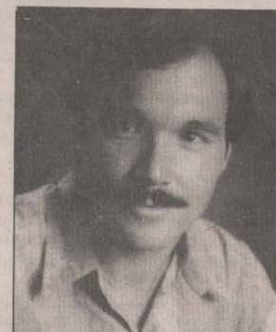
RICHARD WEST



CARL OKUYAMA



ROBERT FUJIMOTO



BRIAN KITAGAWA



SUSAN TISSOT

Pacific Tsunami Museum



Donation of First Hawaiian Bank Building to Pacific Tsunami Museum





Museum in lovely historic downtown Hilo



Rainbow Falls in Hilo

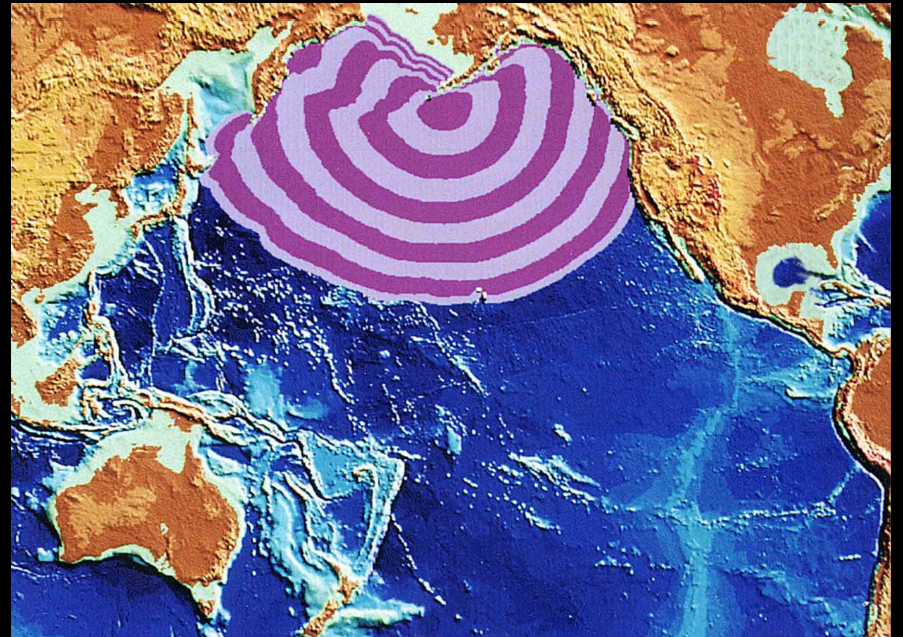
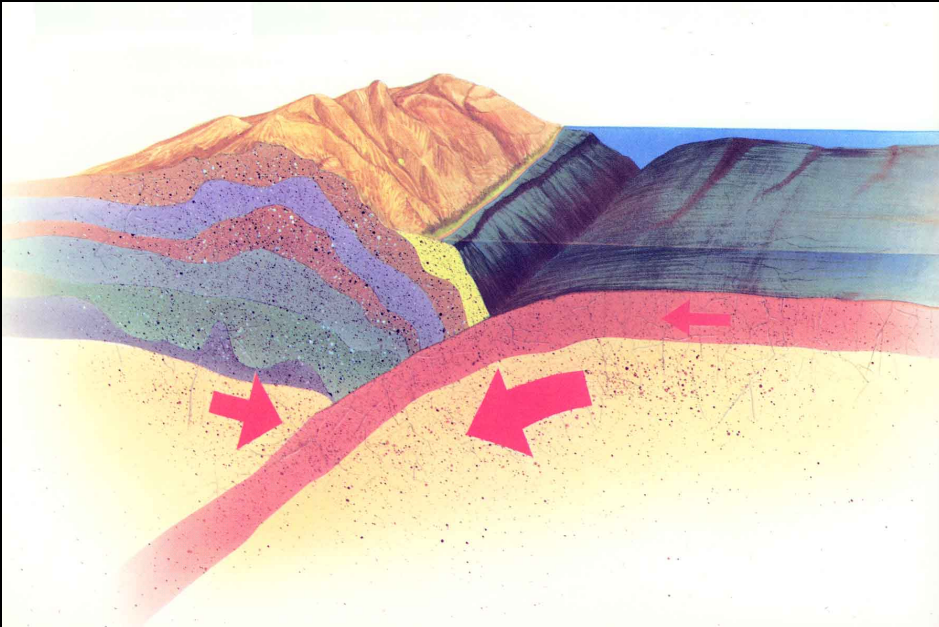


Kilauea Crater in Hawaii
Volcanoes National Park

Museum visitors in 2004 Indian Ocean tsunami exhibit



Tsunami Generation



Educating the public through docent and group presentations



When Tsunamis Reach Shore



**Crest of wave coming
in first – water floods**

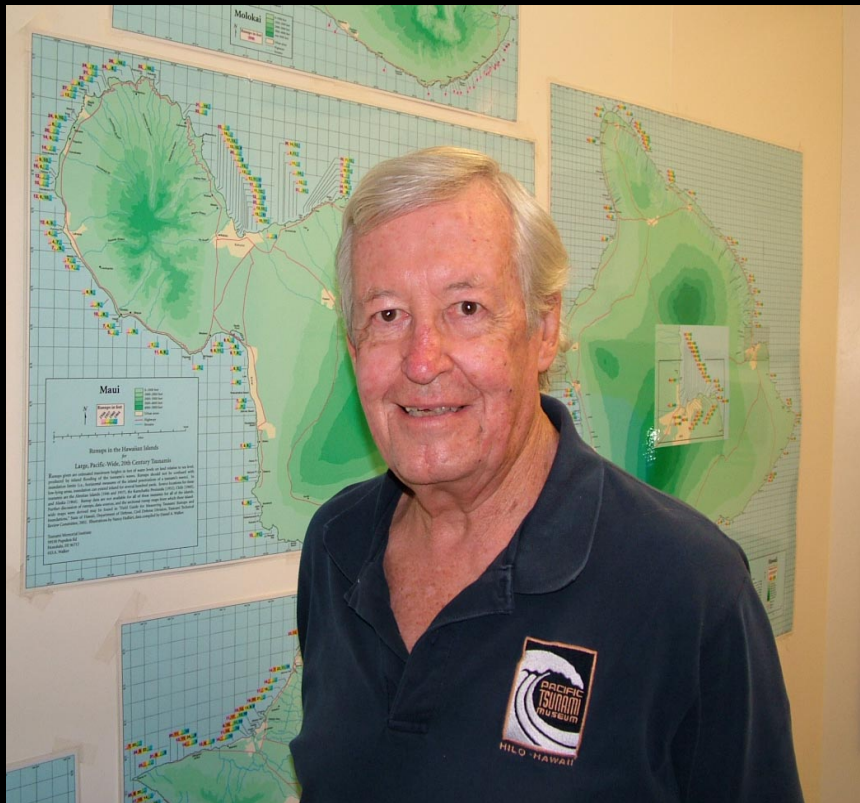
**Trough of wave coming
in first – water recedes**



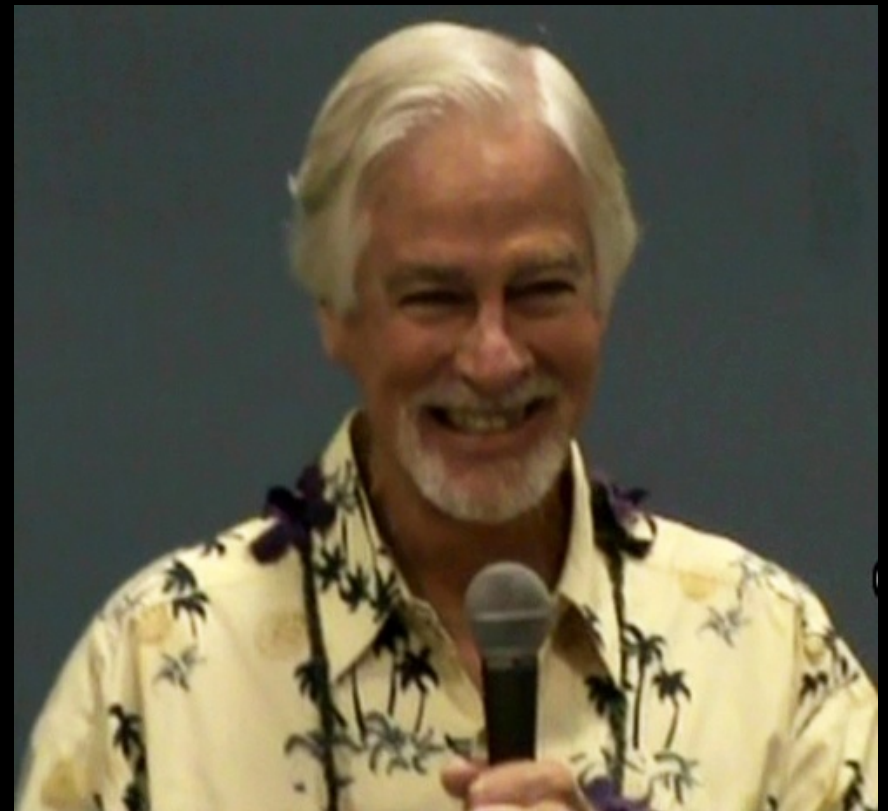
Hilo Bay coastline with open spaces



Museum Scientific Advisors



George Curtis



Dr. Walter Dudley

International Tsunami Information Center (ITIC)

WHAT TO DO? TSUNAMI PREPAREDNESS



TSUNAMI

1. Be aware of tsunami facts. This knowledge could save your life!
2. Share this knowledge with family and friends.
It could save their lives!
3. Determine if you live, work, play, or transit a coastal low lying area or tsunami evacuation zone.
4. Follow the advice of local emergency and law enforcement authorities. Do not return until authorities say it is safe.
5. Stay away from bodies of water. If you are at the beach or near the ocean, and you feel the earth shake, move immediately inland to higher ground. Do not wait for a tsunami warning to be issued. Stay away from rivers and streams that lead to the ocean due to strong tsunami wave action and currents.
6. Take shelter.

If you live in a tsunami evacuation zone and hear that there is a tsunami warning, your family should evacuate your house. Walk in an orderly, calm manner to the evacuation site or to any safe place outside your evacuation zone.

If you are in school and you hear there is a tsunami warning, you should follow the advice of teachers and other school officials.

If you are unable to quickly move inland, high, multi-story, reinforced concrete buildings may provide a safe refuge on the third floor and above.

© UNESCO IOC ITIC



International Tsunami Information Centre
737 Bishop St., Mauka Tower Suite 2200
Honolulu, Hawaii 96813-3213 USA
Tel: <1> (808) 532-6422 Fax: <1> (808) 532-5576
E-mail: itic.tsunami@unesco.org
Website: <http://www.tsunamiwave.info>
Painting by: Lucas Rawah, Papua New Guinea, 1998

The Pacific Tsunami Warning Center

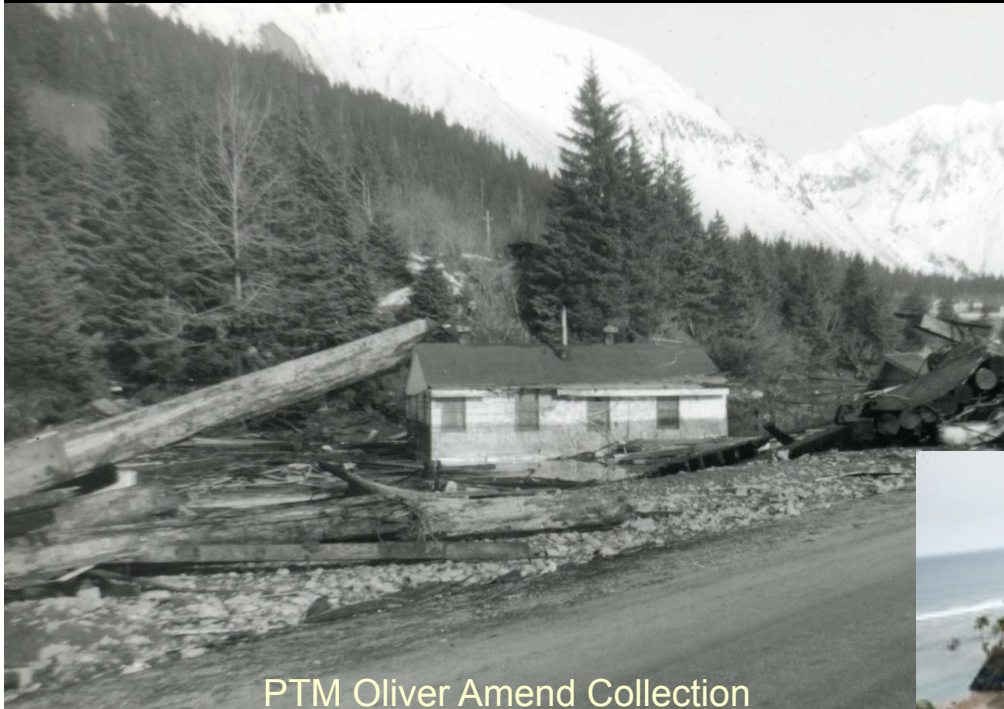


Image from <http://www.prh.noaa.gov/ptwc/>

Tsunami Museums in India and Thailand



*Water line on a house with a dock
piling Seward, Alaska 1964*



PTM Oliver Amend Collection

Aufaga, Samoa 2009



Essay Contest



12--Hawaii Tribune - Herald, Friday, April 7, 1995

Tsunami essay contest winners announced

The Hilo Tsunami Museum announced the winners of its Tsunami Essay contest on Saturday at the Shinmachi Tsunami Memorial adjacent to the Wailoa Center in Hilo. The award ceremony took place following a special memorial service for the family and friends of the victims of the 1946 and 1960 tsunamis that struck Hilo.

Big Island students in grades 5-8 were asked to write essays in 300 or more words in response to the question "Does Anyone You Know Have A Tsunami Story to Tell?" Contestants conducted oral history interviews with survivors from the past tsunami events that have struck the state. Entries were accepted in English and Hawaiian. A total of 120 entries were received. Two entries were submitted in Hawaiian. Prizes were awarded in five categories.

The first prize of two round trip inter-island airfares, donated by Aloha Airlines, went to Travis Veriato, grade 5, Hilo Union School. Veriato interviewed his mother Susan Veriato about her 1960 tsunami experience. The second prize, a \$75 gift certificate from the Hilo Shopping Center, was awarded to Aaron Gumbs, grade 5, Waiakea



Tsunami Essay Contest Winners — In the front row, from left, are Aaron Gumbs, 2nd place winner; Fusayo Ito; Travis Veriato, 1st place winner; and Susan Veriato. In the back row are, from left, Matilda Mooney and Robert W. Thomas Jr., who tied with Malu Debus as a 3rd place winner.

Elementary School. Gumbs interviewed Mrs. Fusayo Ito about her 1960 tsunami experience. Because of a tie, two third place prizes were awarded. Malu Debus, grade 5, Hawaiian Language Immersion School of Keaukaha, was awarded two \$25 gift certificates from the Orchidland Surf Shop and Peavian Logic respectively. Debus inter-

viewed her great grandfather Edward Medeiros about his 1946 tsunami experience. Robert W. Thomas Jr., grade 7, Haumana Christian School, also a third place prize winner, received a \$50 gift certificate from the Orchidland Surf Shop. Thomas interviewed his grandmother Matilda Mooney about her 1946 tsunami experience.

The fourth prize, a \$25 gift certificate from Peavian Logic, was awarded to Leinala Aina, grade 5, Haili Christian School. Aina interviewed her great grand uncle Everett Spencer about his 1946 and 1960 tsunami experiences. Ten fifth place prizes, T-shirts from Prince Kuhio Plaza, were awarded to: Tracie Akana, grade 7, Kohala Intermediate; Thalia Bondsug, grade 6, Hilo Union; Felisa Ednie, grade 8, Hawaiian Preparatory Academy; Linnea Ford, grade 8, Honokaa High School; Kristin Lee, grade 5, Hilo Union; Kerrilyn Murata, grade 5, Waiakea Elementary; Shannon Recabaren, grade 7, Laupahoehoe School; Elizabeth Rock, grade 8, Kalanianaʻole School; Cody Stratton, grade 5, Kaunama Elementary; Sandi Tanoue, grade 8, Honokaa High School. Two outstanding achievement awards, for submitting stories written in the Hawaiian language, were awarded to: Malu Debus, grade 5, Hawaiian Language Immersion School of Keaukaha; and Ku'uwehi Hiraishi, grade 6, Nawaiahoalani 'opu'u School.

The seventeen winning stories will be on display at the Hilo Shopping Center. The Hilo Tsunami Museum is

a non-profit organization whose primary mission is to preserve local history and to promote public education on tsunami. The museum was incorporated in August, 1994 and is currently in a fundraising drive. The museum will be located in Hilo and is working in collaboration with the International Tsunami Infor-

mation Center in Honolulu, the Pacific Tsunami Warning Center at Ewa Beach, the University of Hawaii (at Hilo and Manoa), and State and County Civil Defense. Harry Kim is Public Safety Advisor to the museum. All inquiries may be sent to: Hilo Tsunami Museum, P.O. Box 806, Hilo, HI 96721.

Java Survivor Interview



Laupahoehoe Rescue: The Beginning of the Annual Tsunami Story Festival



2nd Annual Tsunami Story Festival
Anniversary of the 1960 Tsunami



Sunday, May 23, 2004 • 6:00pm
Honpa Hongwanji Hilo Betsuin Sangha Hall

Tickets available at Pacific Tsunami Museum,
KTA Super Stores-Puainako and Keawe St. and
Oceanic Time Warner Cable in the Hilo Shopping Center



LIMITED SEATING • DONATION \$25

PH: 935-0926 • 130 KAMEHAMEHA AVENUE IN DOWN TOWN HILO

PACIFIC TSUNAMI MUSEUM

3RD ANNUAL TSUNAMI STORY FESTIVAL

STORY OF *Shinmachi*

THE LOST TOWN ON THE BAY



Sunday, April 17, 2005 • 6:00pm

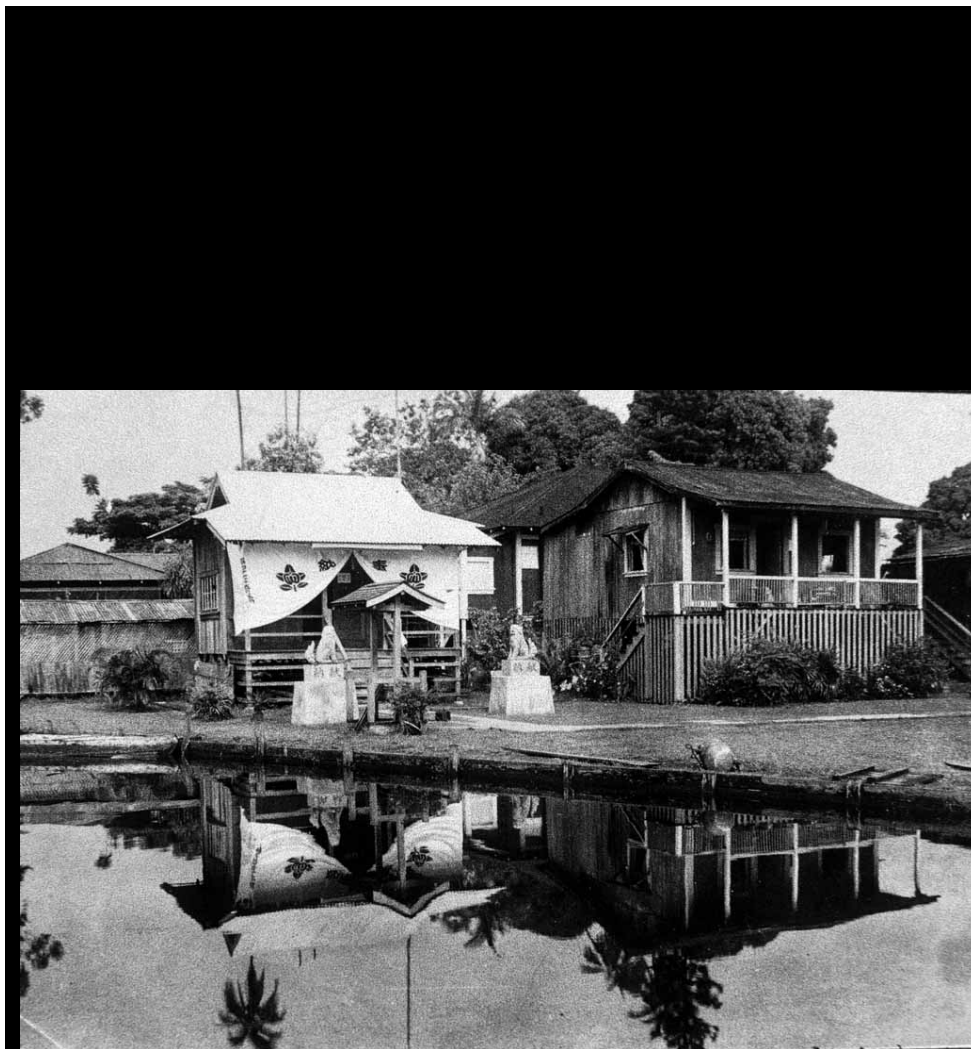
Honpa Hongwanji Hilo Betsuin Sangha Hall

Tickets available at Pacific Tsunami Museum,
KTA Super Stores-Puainako and Keawe St. and
Oceanic Time Warner Cable in the Hilo Shopping Center

**DONATION \$25 • DINNER INCLUDED
LIMITED SEATING**



PH: 935-0926 • 130 KAMEHAMEHA AVENUE IN DOWN TOWN HILO
PACIFIC TSUNAMI MUSEUM



Shinmachi

**4th Annual
Tsunami
Story
Festival**

Commemorating the
60th Anniversary
of the **1946**
Tsunami

and the
**“END
of
the LINE”**
for the

BIG ISLAND RAILWAY

Sun., May 7, 2006

5:30pm

Honpa Hongwanji
Hilo Betsuin Sangha Hall

DONATION \$25

DINNER INCLUDED

LIMITED SEATING!!!

Tickets available at:

Pacific Tsunami Museum

KTA Super Stores

Puainako & Keawe St.

Oceanic Time Warner

in the Hilo Shopping Center



PH: 935-0926

130 KAMEHAMEHA AVENUE IN DOWN TOWN HILO
PACIFIC TSUNAMI MUSEUM



Last run of engine 121

5th Annual Tsunami Story Festival

A Taste of MAMO STREET

Feature Stories:

Selling Newspapers on Mamo St.
Ogi Noodle Shop
Kurohara Tailor Shop
Yuen Chicken Store
Amano Fish Cake Factory
Elsie's Fountain
Sakaki Barber Shop
Diama's Meat Market & Pool Hall
Yamatoza Theatre



SUNDAY, APRIL 1, 2007 @ 6:00 PM
HONPA HONGWANJI
HILO BETSUIN SANGHA HALL

LIMITED SEATING!!!

Tickets available at
PACIFIC TSUNAMI MUSEUM
KTA SUPER STORES Pacific Tsunami Museum & Museum St.
OCEANIC TIME WARNER In the Hilo Shopping Center

DONATION \$25
INCLUDES DINNER



PH: 935-0926
130 KAMEHAMEHA AVENUE
IN DOWN TOWN HILO
PACIFIC TSUNAMI MUSEUM

6th Annual **TSUNAMI STORY FESTIVAL**

Living the Good Life in Waiakea



FEATURING THESE INDIVIDUALS:

GRACE CARTER
JAMES CORREA
RICHARD NAKAMURA
NORA NABETA
SAM BISHAW
LILINOI KELIPIO YOUNG
TED SAKAI
GLORIA MIYASHIRO KOBAYASHI
KAREN UMEDA
JAN MIHARA MIKAMI

SUNDAY, MAY 18, 2008 @ 6PM

HONPA HONGWANJI HILO BETSUIN SANGHA HALL

\$25 DONATION INCLUDES DINNER

TICKETS AVAILABLE AT:

PACIFIC TSUNAMI MUSEUM

KTA SUPER STORES PUAINAKO & KEAWE ST.

OCEANIC TIME WARNER IN THE HILO SHOPPING CENTER

**LIMITED
SEATING!!!**

HAWAII
TOURISM AUTHORITY



PH: 935-0926
130 KAMEHAMEHA AVENUE
IN DOWN TOWN HILO
PACIFIC TSUNAMI MUSEUM



Liliuokalani Gardens in Waiakea

7th Annual TSUNAMI STORY FESTIVAL

TSUNAMI FIRST RESPONDERS



Featuring these individuals:

Policemen Teruo Morigaki & Robert Chow

National Guardsman Yukio Takeya

Red Cross Curtis Narimatsu

Mortician Larry Dodo

News Photographer Larry Kadooka

Boy Scout Ronald Furukawa

Plus..

The Navy's ill fated sea rescue at Laupahoehoe by Dr. Walter Dudley

SUNDAY, APRIL 5, 2009 @ 6PM

HONPA HONGWANJI HILO BETSUIN SANGHA HALL

\$25 DONATION INCLUDES DINNER

TICKETS AVAILABLE AT:

KTA SUPER STORES PUAINAKO & KEAWE ST.

CALL PACIFIC TSUNAMI MUSEUM 935-0926

**LIMITED
SEATING!!!**

HAWAII
TOURISM AUTHORITY



**PACIFIC
TSUNAMI MUSEUM**
130 KAMEHAMEHA AVENUE
IN DOWNTOWN HILO

2010 Story festival – Hilo Perseveres





APRIL IS TSUNAMI AWARENESS MONTH IN HAWAII

2009 Tsunami Education Activities and Events

Honolulu

March 28-29

1st Annual Hawai'i Ocean Expo

9am – 9pm Sat, 9am – 6pm Sun, Neal Blaisdell Exhibition Hall, Honolulu
NOAA tsunami experts will be on-hand to answer questions and provide preparedness information. Visit our booth in the Ocean University aisle.
Info.: 808-532-6411.

April 1

Tsunami Talk Story – Education & Media Event

10am – 11am, Holy Trinity Catholic School, 5919 Kalaniana'ole Hwy
NOAA, O'ahu Dept. of Emergency Management, Pacific Tsunami Museum, and Tsunami Memorial Institute will honor 1946 O'ahu tsunami survivor Kupuna Kainoa Wright and announce new Tsunami Poster distribution to Hawaii schools. Info.: 808-532-6411.

April 11

2nd Annual Mauka to Makai Environmental Expo

9am – 1pm, Waikiki Aquarium, 2777 Kalakaua Ave, Honolulu
NOAA will sponsor display, keiki activities, and provide tsunami preparedness materials. Free public admission to aquarium. Info.: 808-532-6411.

April 17-18

Iolani School Fair & Earth Day

12pm – 6:30 pm, Iolani School, 563 Kamoku St, Honolulu
NOAA will sponsor display, keiki activities, and provide tsunami preparedness materials. Info.: 808-532-6411.

April 18

Kahala Mall Earth Day

10am – 2pm, Kahala Mall, 4211 Wai'alae Avenue, Honolulu
NOAA will sponsor keiki activities and provide tsunami preparedness information. Info.: 808-532-6411.

Hilo

April 1

Opening of *The Wave Machine: Energy of Moving Water* Exhibit

5pm, Pacific Tsunami Museum, 130 Kamehameha Ave, Hilo
Info.: 808-935-0926



This guide is a product of the
*Tsunami Education, Preparation
and Recovery Project for
Downtown Hilo*; An innovative
partnership between the Pacific
Tsunami Museum and the Hawai'i
County Department of Planning.

HOW TO PREPARE YOUR BUSINESS FOR THE NEXT

TSUNAMI

A Guide for Businesses in the Hawaiian Islands



© 2008 Pacific Tsunami Museum

Tsunami damage and debris on Haili Street following the
April 1, 1946 tsunami.

Tsunami Safe Fair



FREE



The
EAST HAWAI'I
DRIVING & WALKING TOUR
of
HISTORICAL TSUNAMI
SITES



Devastation in Hilo after the 1960 tsunami, *Matt Chow collection.*

Supported by the **Hawai'i Tourism Authority**
and the **Pacific Tsunami Museum**

Produced by the Pacific Tsunami Museum
130 Kamehameha Ave., Hilo, HI 96720
Tel: (808) 935-0926

©2005 Pacific Tsunami Museum, Hilo, Hawai'i

Tsunami Observer Program



Tsunami Clock



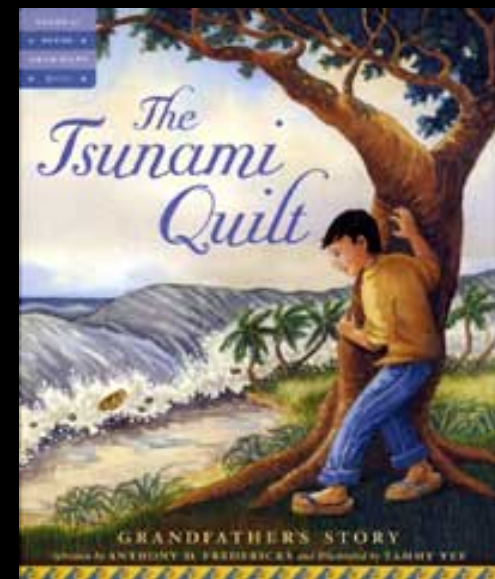
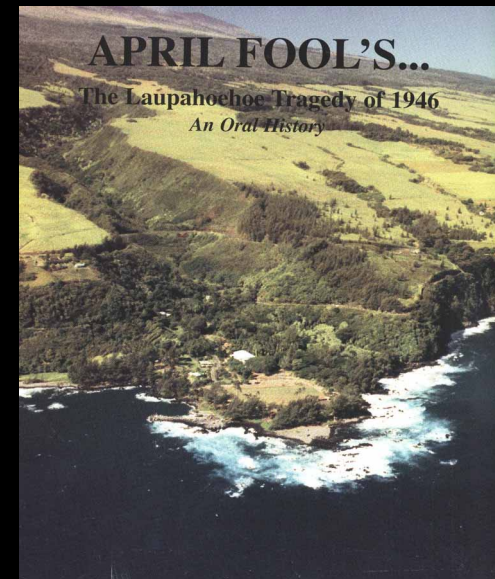
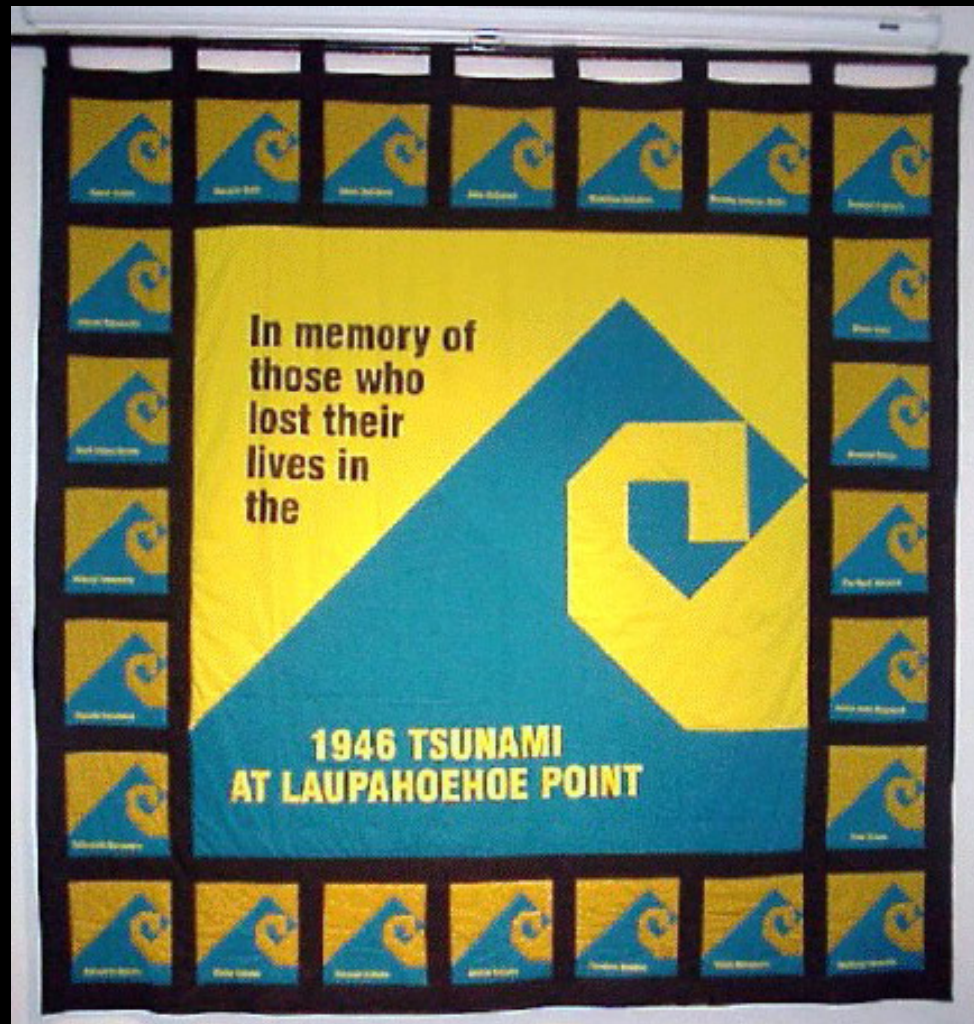
Shinmachi Memorial



Laupahoehoe Monument



The Tsunami Quilt



Hilo Hongwanji Betsuin Oral Histories



